



2017 Annual Report

MAAP Midwest Adult Autism Project
The Center for Specialized Services

Center for Head Injury Services

Founded in 1986, the Center for Head Injury Services is an internationally accredited nonprofit organization that provides rehabilitative and support services to people with disabilities. The mission of the organization is to help people with brain injuries, autism and other disabilities reach their maximum potential by developing skills, creating opportunities and shaping brighter futures.



stlouis.bbb.org



11828 Lackland Road
St. Louis, MO 63146

314-983-9230
headinjuryctr-stl.org

Every person deserves the opportunity to lead a life which fulfills their potential. Whether that means employment, volunteer work or participating in social activities, the Center stands ready to help with a full line of neurological, rehabilitative and vocational services.

Highlights of the Center's services:

Adult Day Services: The Center offers day programs that provide cognitive enrichment, stimulating recreational activities and meaningful social interactions. Participants set personalized goals, engage in prevocational tasks and community integration, and receive assistance with activities of daily living. The programs are available Monday through Friday and offer caregivers support, education and respite.

Clinical and Counseling Services: The Center offers continued rehabilitation services to maximize quality of life and increase independence. Our licensed physical, occupational and speech therapists provide skilled therapy treatments and our licensed counselors offer individual, family and group counseling sessions.

Adaptive Equipment: The Center helps people get the equipment and devices they need to become and stay independent. Adaptive equipment can help a person with activities of daily living, such as bathing, toileting, eating, mobility and engaging in their community.

Employment and Vocational Services: The Center is dedicated to assisting people with finding meaningful, paid employment. Our employment services include vocational evaluation, skills assessments, career exploration, vocational training, individualized job placement, on-site job supports and continuing job retention. The Center also actively prepares youth for their transition from school to work.

Talent Connect: Talent Connect is an innovative approach to training and employment with a focus on manufacturing and distribution industries. We offer industry-embedded training to participants and provide candidate sourcing to our business partners.

Social Enterprises: The Center owns and operates social enterprises (Destination Desserts and Wags in a Bag) as a means to provide training and employment opportunities for people with disabilities. All of the products from the Center's social enterprises are handmade, packaged and sold by an integrated workforce. Proceeds from the social enterprises support the Center.

Community Support Services: For many people with disabilities, barriers in their communities may limit their choices for an independent life. The Center offers a holistic approach to support the needs of those wanting to gain the skills to live independently, maintain employment and safely engage in the community.

2017 BOARD of DIRECTORS

Mark Riordan-President

Jay Smith-Vice President

Mark Stallmann-Secretary

Jon Cline, Esq.-Treasurer

Barb Dolan-Past President

Jennifer Koenig

Janet Loomis

Kathy Malarkey

Steve Mastin

John Rosen

Linda Statler

Steve Tucker

Ralph Turney

EMERITUS

Dennis Beckley, Esq.

Rebecca Herwick

Richard Katz, M.D., Medical Director/Consultant

Donna L. Gunning M.Ed., CRC, LPC, Executive Director

FINANCIAL STATEMENT

FISCAL YEAR 2017

July 1, 2016 - June 30, 2017

ASSETS

Current Assets	935,557
Property, Plant and Equipment	2,743,757
Other Assets	1,475
Total Assets	\$3,680,789

LIABILITIES

Current Liabilities	\$2,252,933
Long Term Debt	\$534,905

NET ASSETS

Unrestricted Fund Balance	680,671
Temporarily Restricted	212,280
Total Liabilities and Capital	\$3,680,789

REVENUE

Interest Income	310
Grants	435,813
Private Funding	8,982
Government Contracts	2,720,307
Fundraising	71,450
Contributions	219,969
Miscellaneous	22,839
Sales	164,129
Other	
Total Revenue	\$3,643,799

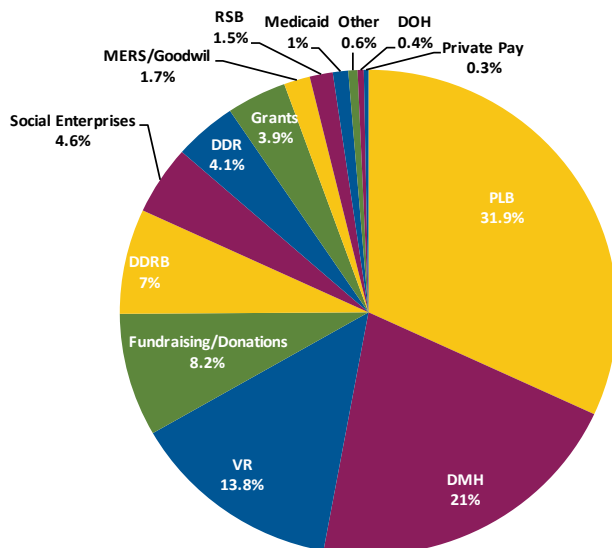
EXPENSES

Community Support Services	430,259
Day Services	484,642
Employment/Vocational Services	753,871
Medical Services	235,000
Midwest Adult Autism Program (MAAP)	351,491
Destination Desserts	353,674
Management and General	602,437
Fundraising	181,221
Total Expenses	\$3,392,595

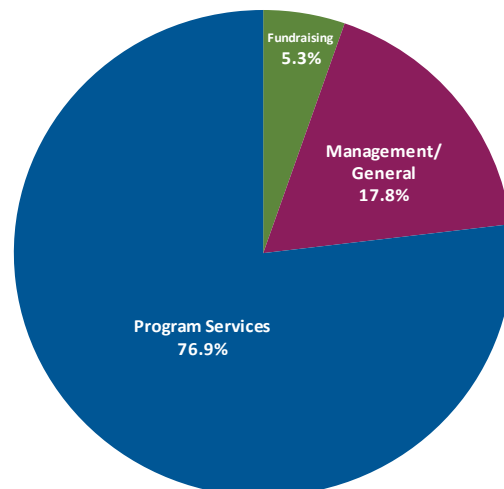
Major Funding Sources for the Center:

- Developmental Disabilities Resource Board for St. Charles County
- Francis Howell School District
- Illinois Department of Rehabilitation Services
- Missouri Department of Economic Development
 - Neighborhood Assistance Program
 - Youth Opportunity Program
- Missouri Department of Health and Senior Services - Adult Head Injury Program
- Missouri Department of Mental Health
 - Division of Developmental Disabilities -St. Louis Regional Center
- Missouri Department of Social Services
 - MO HealthNet Division
- Missouri Department of Social Services
 - Rehabilitation Services for the Blind
- Missouri Department of Elementary and Secondary Education
 - Division of Vocational Rehabilitation
- Productive Living Board for St. Louis County
 - Citizens with Developmental Disabilities
- St. Louis Office for Developmental Disabilities Resources

Revenue Sources 6/30/17



Expenses 6/30/17



Donations above \$500 – July 1, 2016 to June 30, 2017:

\$100,000 and above

Anonymous
The J. E. & L. E. Mabee Foundation

\$20,000 – \$99,999

The Foundation for Barnes-Jewish Hospital
Rebecca Herwick
The Poses Family Foundation
Mark and Nancy Riordan

\$5,000 – \$19,999

Anheuser-Busch
The Episcopal Presbyterian Health Trust
E.L. and Marilyn Prange
Property Assessment Review
The Saigh Foundation

\$1,000 – \$4,999

Anonymous
AT&T
BASF Corporation
Christina and Jason Becker
Byrne & Associates Real Estate, LLC
Charles L. Crane Agency
Commercial Bank
Dan Creston
First Community Credit Union
Global Products, Inc.
Amin Iqbal and Nafisa Bashar
Paul and Donna Jackson
Jennifer Koenig
Bryan and Cathy Koetting
Miles Properties, Inc.
Eric and Joyce Nelson
Newco Enterprises, Inc.
Brad and Linda Purcell
The Sander Foundation
James "Jay" and Joan Smith
Brad and Linda Statler
Daniel and Dorothy Steimke
Stifel Financial Corp.
United Access, LLC
Walmart
Weir Minerals

\$500 – \$999

Aegion Corporation
Martin Anbari
Armstrong Teasdale LLP
Community Health Charities
Wendy Dyer
Christine Eastvold
Thomas and Donna Gunning
Cal and Ann Hawkins
Sue Kaiser
Kohl's Department Stores
Kopytek, Inc.
Ken and Peggy Lewis
Missouri Foundation for Health
Carol Reinhardt
RPA Construction Services
Linda Spencer
Springfield Neurological and Spine Institute, L.L.C
Sanford and Jane Thal
Western Specialty Contractors

The Center's individual and institutional donors are key supporters, investing in our mission to improve the lives of people with disabilities.

On behalf of the people we serve, we thank our donors for their extraordinary generosity and recognize them for their dedication to our cause.